

CONTAINER-BREEDING MOSQUITOES IN THE PACIFIC

A QUICK REFERENCE GUIDE FOR LARVAL IDENTIFICATION



ANOPHELES



AEDES

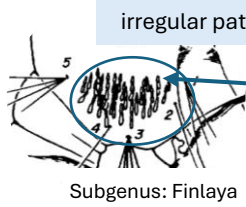


CULEX

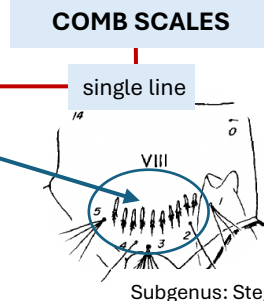
- Unconfirmed vector of dengue
- Container breeders / co-habitat

Ae. notoscriptus* / *Ae. kochi

Subgenus: Finlaya



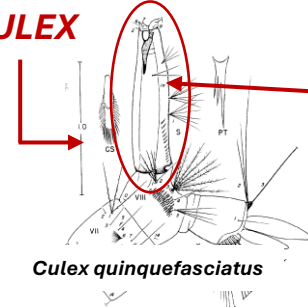
Comb Scales



COMB SCALES

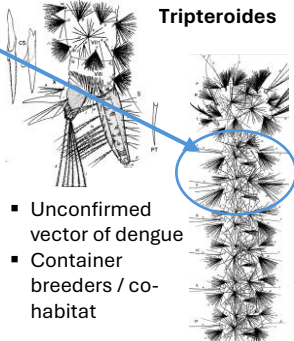
SETAE HAIRTYPE

ANAL SADDLE



Tufts of 4+ strands, may cover much of the entire body

Tripteroides



Ae. pseudoscutellaris

May also be heavily spiked

Pitchfork - 3 pronged

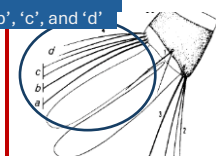
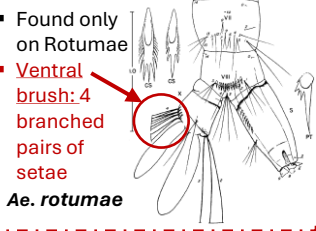
COMB SCALE

pitchfork-like

thorn-like

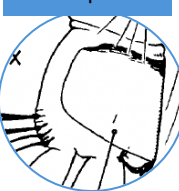
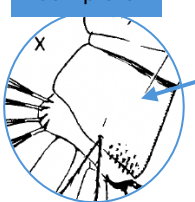
VENTRAL BRUSH

Strands 'a', 'b', 'c', and 'd'



complete

incomplete



COMB SCALE

pitchfork-like

thorn-like

VENTRAL BRUSH

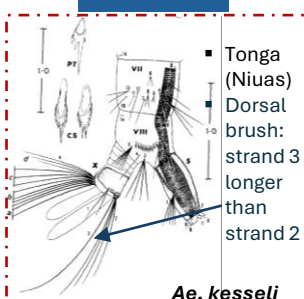
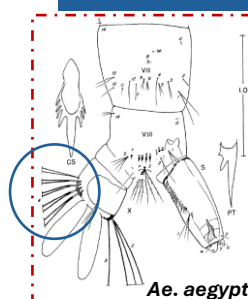
5 pairs of branched strands

4 tufts of 2 or more strands

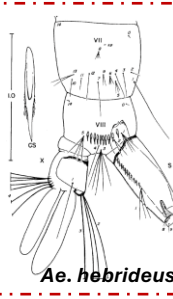
4 single strands

Strand 'd' double

Strands 'a' and 'b' single



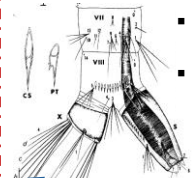
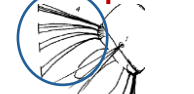
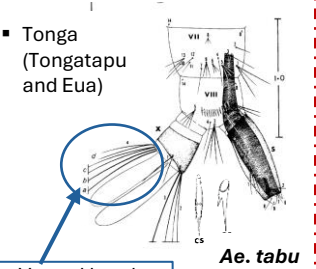
ANAL SADDLE



Strands 'a', 'b' single

4 pairs of branched strands

Strands 'a', 'b' double

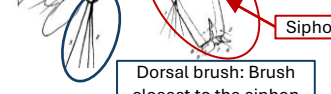


Ventral brush: strands 'a' and 'b' are double

DORSAL BRUSH

Strands '2' and '3'

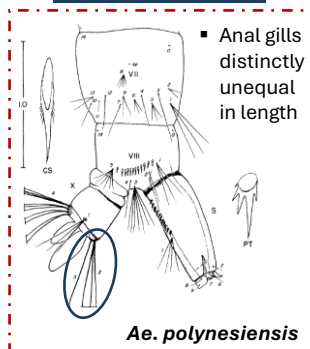
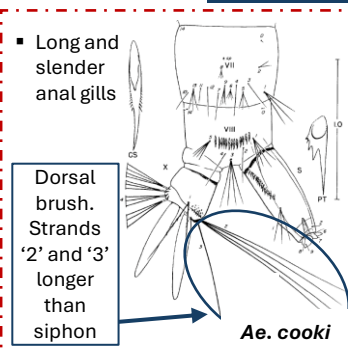
Ventral brush: strands 'a' and 'b' are single



Dorsal brush: Brush closest to the siphon

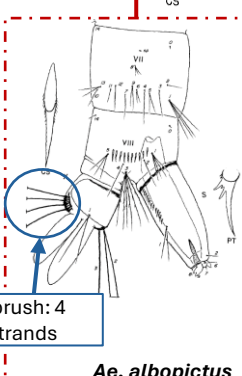
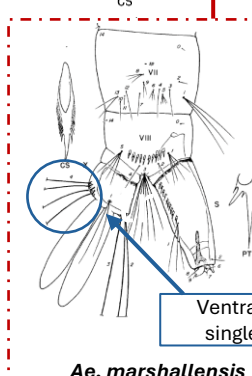
length longer than siphon

length same or less than siphon



fringed

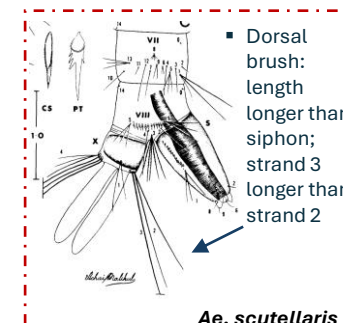
slender, not fringed



COMB SCALE



Rough, darker colour to anal saddle



Appears smooth, lighter in colour

